

Violoncello

Boeing 767

Matti Sunell 2005

♩ = 120

1 *mf* *f*

5 *mf* *f* *mf*

10 *f* *mf*

14 *f* *mf*

19 **A** *f espress.*

24

30

36

41 **B** *pp*

45

Violoncello

49 *mp* *pp* *mp* *pp*

53 *mp* *pp*

57 *mp*

61 *pp* *cresc.* *f* **C**

65

70 *f* *mf* **D**

74 *f* *mf*

78 *f* *mf*

82 *f* *mf*

86 *rall.* **15**
16

Violoncello

91 **E** ♩ = 80
pizz.

91 *p*

98

103

103 *mf*

108

108 **F** arco marcato

114

114 *più f*

119

125

G

131

H

131 *mf*

136

141

I

141 *pp cresc.*

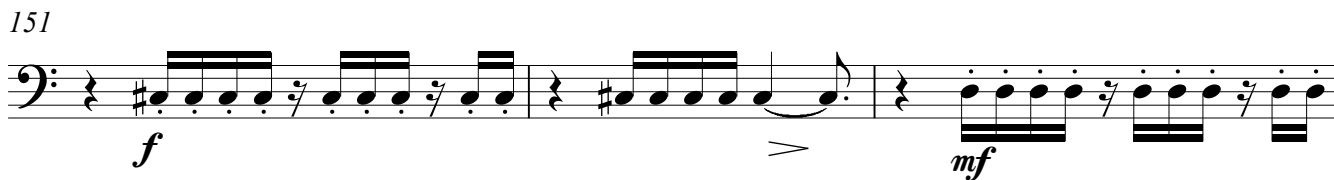
146

146 *f*
p cresc.

149



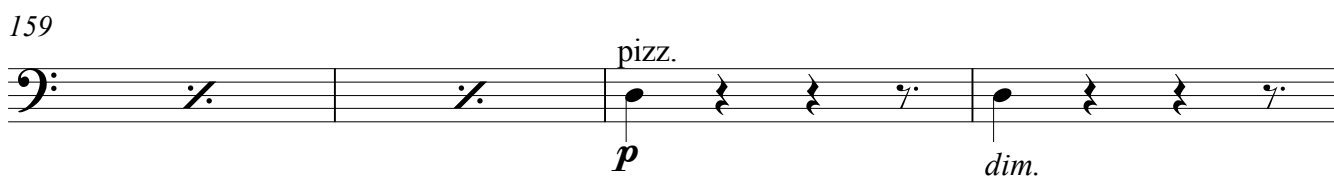
151



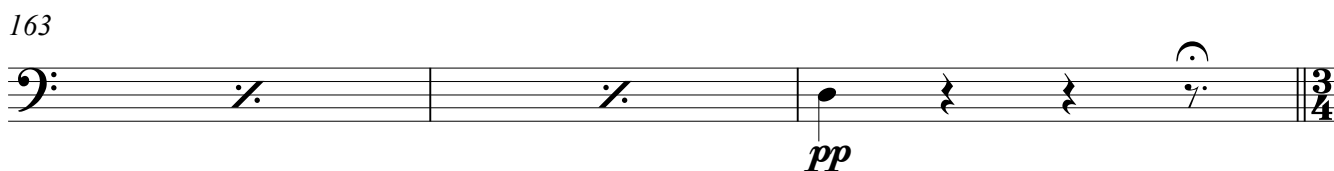
154



159



163



166 J $\text{♩} = 60$

arco
sul pont.
p espress. *ppp*

172 sul pont.
ppp

2

178 pizz.
pp

183 arco
sul tasto pizz.
pp

188 arco
p espress.

194 sul pont.
ppp

2 sul pont.
ppp

200 pizz.
pp

205 arco
sul tasto pizz.
pp

210 arco
sul pont.
ppp

213 *pp*

Violoncello

217 **K** ♩ = 80

7

217-226

f

Staff 217-226: Bass clef, 3/4 time signature with a 5+7/16 subdivision. Measure 217 has a whole rest. Measure 218 has a fermata. Measures 219-226 contain a series of eighth-note patterns with accents and slurs. A dynamic marking of *f* is present.

227

227-229

pp

Staff 227-229: Bass clef, 3/4 time signature. Measures 227-229 contain eighth-note patterns with slurs. A dynamic marking of *pp* is present.

230

230-233

Staff 230-233: Bass clef, 3/4 time signature. Measures 230-233 contain eighth-note patterns with slurs. A repeat sign is present at the end of measure 233.

234

234-237

mf *pp*

Staff 234-237: Bass clef, 3/4 time signature. Measures 234-237 contain eighth-note patterns with slurs and accents. Dynamic markings of *mf* and *pp* are present.

238

238-241

Staff 238-241: Bass clef, 3/4 time signature. Measures 238-241 contain eighth-note patterns with slurs. A repeat sign is present at the end of measure 241.

242

242-245

L *f* *mf*

Staff 242-245: Bass clef, 3/4 time signature. Measures 242-245 contain eighth-note patterns with slurs and accents. Dynamic markings of *f* and *mf* are present. A section marker **L** is above measure 243.

246

246-250

Staff 246-250: Bass clef, 3/4 time signature. Measures 246-250 contain eighth-note patterns with slurs. Repeat signs are present at the end of measures 246, 248, and 250.

251

251-254

f

Staff 251-254: Bass clef, 3/4 time signature. Measures 251-254 contain eighth-note patterns with slurs and accents. A dynamic marking of *f* is present.

255

255-258

mf

Staff 255-258: Bass clef, 3/4 time signature. Measures 255-258 contain eighth-note patterns with slurs. A dynamic marking of *mf* is present. A repeat sign is present at the end of measure 258.

259

259-261

M *mf*

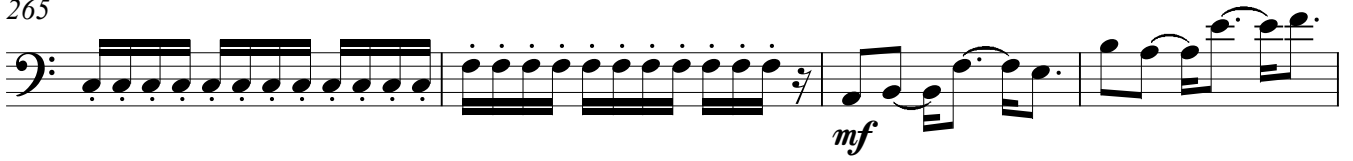
Staff 259-261: Bass clef, 3/4 time signature. Measures 259-261 contain eighth-note patterns with slurs. A dynamic marking of *mf* is present. A section marker **M** is above measure 259.

262

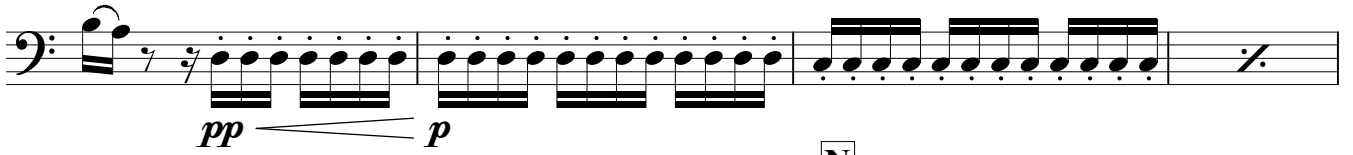
262-265

Staff 262-265: Bass clef, 3/4 time signature. Measures 262-265 contain eighth-note patterns with slurs.

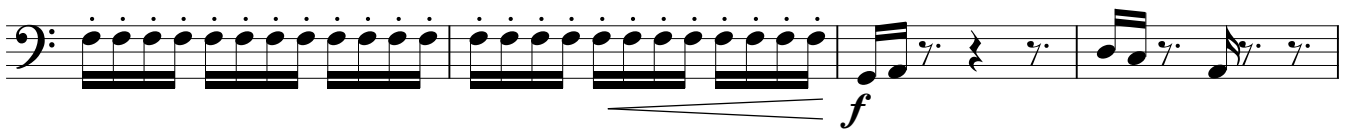
265



269



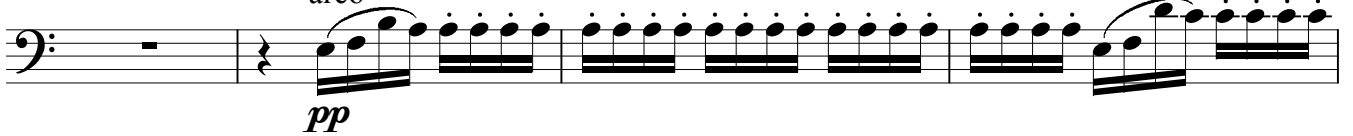
273



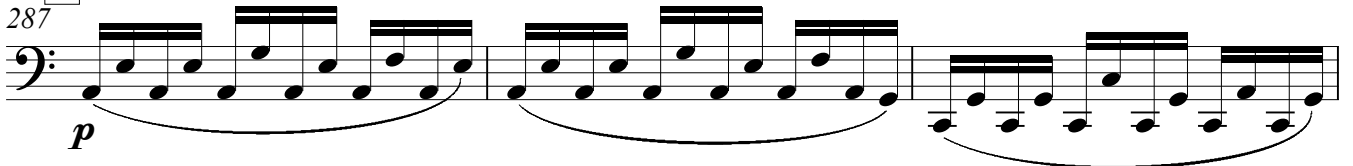
277



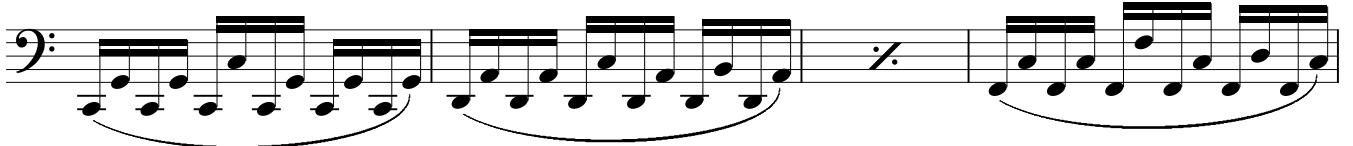
283



287



290



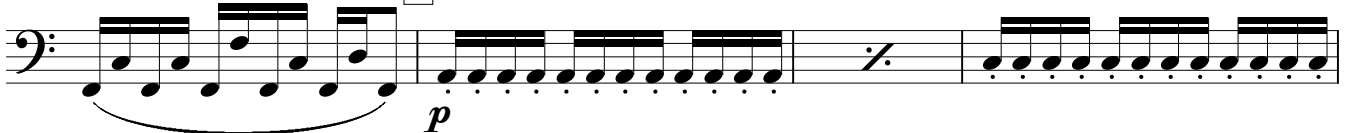
294



298



302



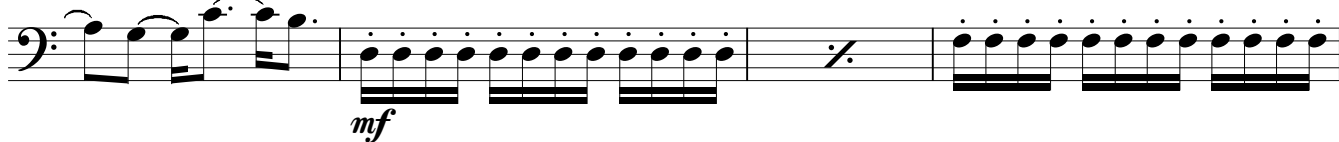
306



310



314



318



321

